



JR Group of Companies

Bhavnagar, Gujarat

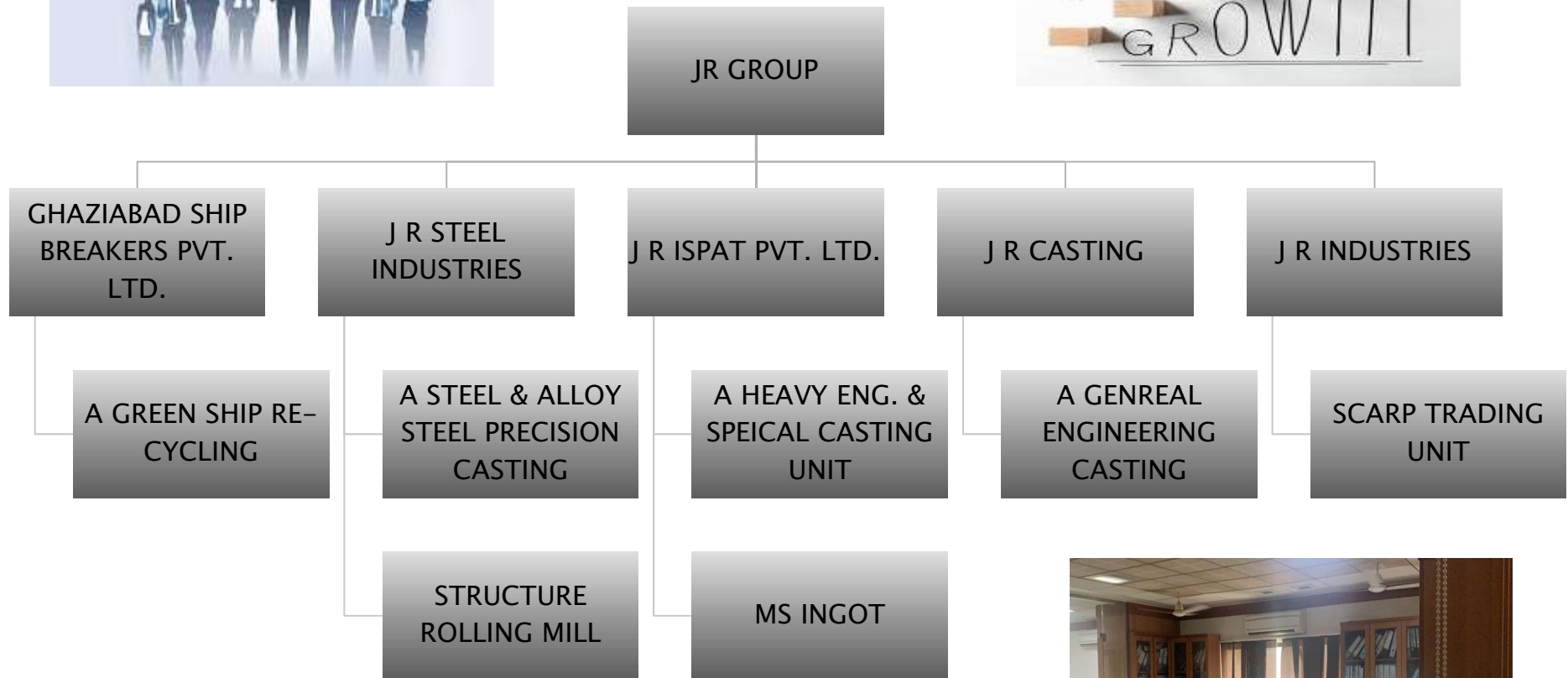


- * J R Steel Industries
- * Ghaziabad Ship Breakers Pvt. Ltd.,
- * J R Ispat Pvt. Ltd.,
- * J R Casting
- * J R Industries



- * A reputed brand name in steel plants located in Bhavnagar, Gujarat
- * Established in the year 1991
- * Total Installed Capacity – 1,20,000 Tons per annum
- * Group Turnover – Rs.480 Cr
- * Practicing ISO 18001:2007, ISO 14001:2007 and ISO 9001:2015

Business verticals



J R Steel Industries

- * Established in the year 1995
- * Installed Capacity – 40,000 Metric Tons per annum
- * Steel hot rolling mill
- * MS Round, CTD Bars and MS Structure
- * 20500 Sq. Mts land and 12000 Sq. Mts Industrial building
- * Practicing ISO 9001:2015 IS 2062–2011 and BIS Approved
- * Employment – 400 Direct labours
- * Location – Ghanghali road, Sihor, Bhavnagar
- * Approved vendor of Gurarat Urja Vikas Nigam Ltd.,



J R Steel Industries – Precision Casting Unit

- * Established in the year 2019
- * Installed Capacity – 1200 Metric Tons per annum
- * Practicing ISO 9001:2015 QMS
- * 350 Kg and 750 Kg Induction Furnace
- * SG and Alloy Steel castings – 150 Grms to 18 Kgs
- * Employment – 120 Direct and Indirect labours
- * Location – Ghanghali road, Sihor, Bhavnagar, Gujarat
- * Pump impellers, casting, valve bodies, defence parts and General Engg.
- * Process – Shell mold casting and Investment casting



Ship Re-Cycling Plant

- * Established in the year 1997
- * Ghaziabad Ship Breakers Pvt. Ltd., Alang
- * Installed Capacity – 45,000 Metric Tons per annum
- * Practicing ISO 9001:2015 and ISO 14001:2015 QMS
- * Environment Management and Hazardous Waste Management System
- * Practicing ISO 45001:2018 Operational Health & Safety Management System
- * Practicing ISO 30000:2009 Ship Re-Cycling Management System
- * HKC & EU Certified and Class RINA & Class IR
- * 32500 Sq. Mts land and 6000 Sq. Mts Industrial building
- * Employment – 650 Direct and Indirect labours
- * Location – Alang, Bhavnagar, Gujarat



J R Ispat Pvt. Ltd.,

- * Established in the year 2006
- * Installed Capacity – 40,000 Metric Tons per annum
- * Integrated Steel Plant – MS Ingots Molds for TMT Bars and Structural Products
- * Heavy Engineering Casting up to 40 Tons single piece
- * In house pre-machining shop floor – Heavy duty lathe and Planners
- * Practicing ISO 9001:2015 QMS and IS 2062:2011
- * 12500 Sq. Mts land and 5500 Sq. Mts Industrial building
- * Employment – 375 Direct and Indirect labours
- * Location – Ghanghali road, Sihor, Bhavnagar



J R Casting



- * Established in the year 2010
- * Capacity – 15,000 Metric Tons per annum
- * Practicing ISO 9001:2015 and IS 2062:2011
- * Single and Duplex Ingot Molds, Bottom Plate, Slag Pot and Counter weights
- * 12500 Sq. Mts land and 7500 Sq. Mts Industrial building
- * Employment – 450 Direct and Indirect labours
- * Location – Ghanghali road, Sihor, Bhavnagar, Gujarat
- * Pump Casting, valve bodies, cylinder casings, oven door frame and flash plate
- * Weight range – CI up to 30,000 Kgs / SG – up to 5,000 Kgs
- * In house Laboratory for chemical and mechanical testing
- * BIS Approved and largest counter weight suppliers in India

Photos Gallery



Photos Gallery



Exhibitions Participated

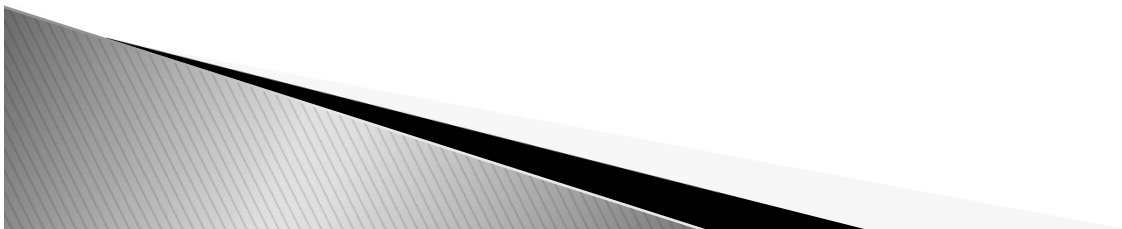


Meeting with USA / EU Customers



Industries served

- * Ordnance Factory – Defence and Aerospace
- * Steel Plants and Heavy Engineering
- * Earth Moving, Mining Industries and Port Cranes
- * Material Handling Equipment Manufacturers
- * Pump, Valve Bodies and Gear Box Manufacturers
- * Integrated Steel Plants and Special Steel Plants
- * Construction and Govt. Steel Plants
- * Machine Tool Industries
- * General Engineering Industries and Special Purpose Machine Builders



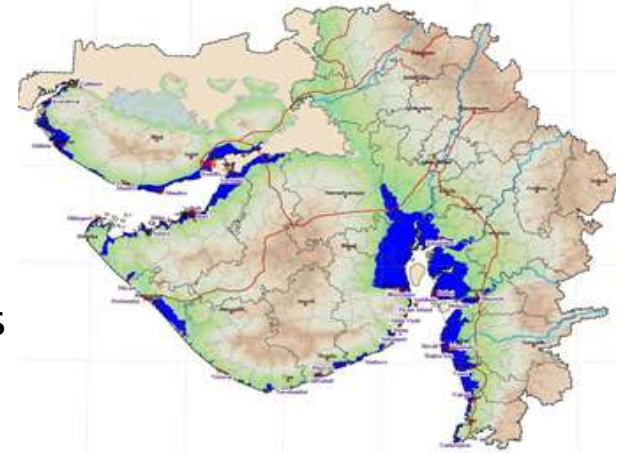
Our Star Customers



Heavy Engineering Corporation Ltd.
(A GOVERNMENT OF INDIA ENTERPRISE)
Ranchi, India

Gujarat – Logistic and Infrastructure

- * 2 International, 6 Domestic airports and 2 Seaports handle 40% of India's cargo
- * 4030 Kms National highway infrastructure
- * 19750 Kms State Highway infrastructure
- * Largest Industrial Development Corporation in India
- * 52300 Kms well established power transmission lines
- * Excellent Industrial Policy and Schemes
- * Vibrant Gujarat – 8% of India's GDP, 20% India's Export, 5% of India's population and 43% in Urban area
- * No.1 state in India to attract FDI



Stay Safe! and save the earth



Thank You



J R Group of Companies
Consultant - Business Development

G.T. Bharath, M.Tech., (Ph.D), Casting India®

Office: Post Box No, 5123, No. 12, Natesa Gounder Layout - II, Rathinapuri
Coimbatore - 641027, Tamil Nadu, India

www.castingindia.com / www.castingindia.in / www.castingindia.net
jrcasting@castingindia.com / +91 9750660601 / +91 8825721885

Corporate Office: B-201-202, "LEELA EFCEE" Complex, Near Asharwadi, Waghawadi Road Bhavnagar -
364002, Gujarat, Phone: +91 278 2570210, 3005630 / +91 9879112949

www.jrcasting.in / www.jrgroup.co.in

Works: SF No. 40, Vadiya Village, Sihor Taluk, Sihor - Ahmedabad Road, Bhavnagar-364240 Gujarat
Ph.: +2846 223664